

ROOTT R IMPLANT PLACEMENT PROTOCOL from box opening to complete implant insertion

1 Take a box in your hand



2 Open the box: push & pull to open



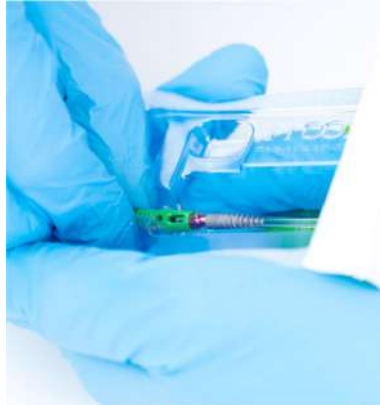
3 Take the blister out



4 Carefully open the blister



5 Take out the implant, holding only the green part



Different HE-END versions:

Different carrier CRE versions:



Different ROOTT R implants design:



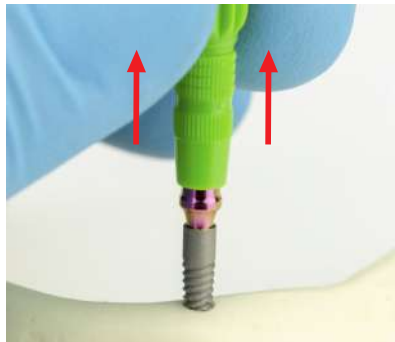
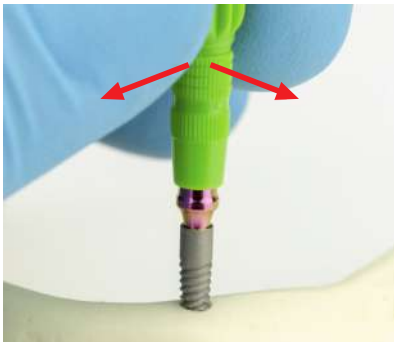
Same following steps for all ROOTT R implant insertion.

- 6 Immediately insert clockwise implant to prepared hole, just after opened the box, holding on green holder



Green holder is not intended to be used as an implant driver

- 7 Remove green holder by side to side slow motion and lift up



- 8 Insert implant via CRE with implant driver **C CS B BS** . Use implant driver ITES/ITE/ITEL/ITEXL for ratchet TW50 with torque up to 40 Ncm



Or implant driver ITEH/ITEHL for handpiece, use contra-angle handpiece



Or implant driver ITEAO for AO connection, use ETAO handle



Implant insertion via CRE carrier part - never exceed 50 Ncm

- 9 Remove CRE.
Unscrew SLT8 screw with screwdriver U . Use screwdriver SD/SDL/SDXL for ratchet TW50



Or screwdriver SDH/SDHL/
SDHXL for handpiece,
use contra-angle handpiece



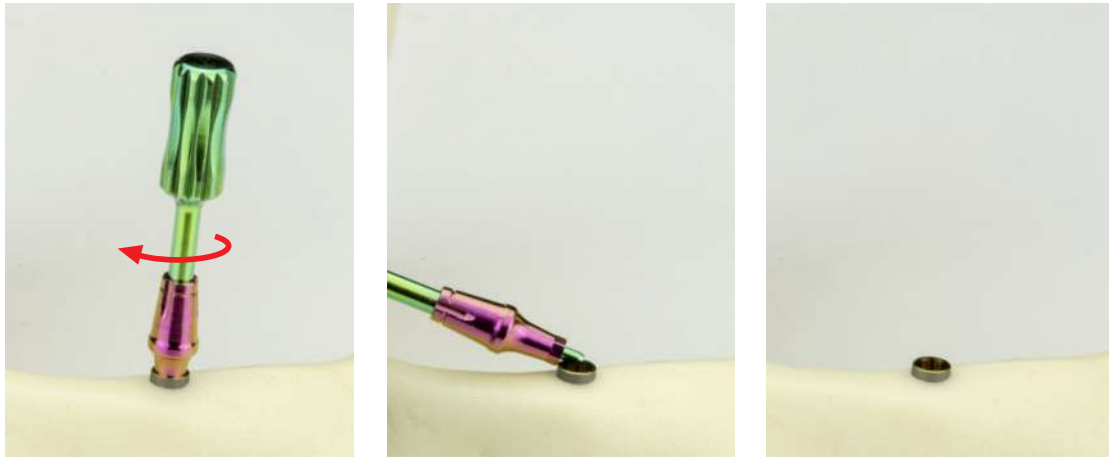
Or screwdriver SDAO
for AO connection, use
ETAO handle



Remove the screw



And remove with abutment extractor **R** SR/SRL



- 10 Insert implant via direct insertion with implant driver **R**
Use implant driver IT/ITL for ratchet TW50 with torque up to 50 Ncm.



Or implant driver
ITH/ITHL/ITHS for handpiece,
use contra-angle handpiece



Or implant driver ITAO
for AO connection,
use ETAO handle



Implant insertion via direct insertion never exceed 100 Ncm.

11 Implant inserted in subcrestal position

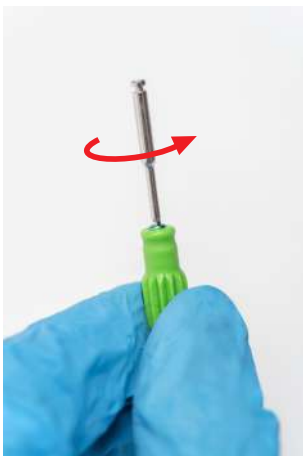


12 A: Implant can be covered with covering screw SC.

Unscrew a cover screw SC from the green holder.
Manually unscrew with screwdriver SD/SDL/SDXL



Or with screwdriver SDH/SDHL/
SDHXL for handpiece,
use contra-angle handpiece



Or with screwdriver SDAO for AO
connection, use ETAO handle



Screw cover screw SC to cover the implant

With screwdriver SD/SDL/SDXL for ratchet TW50, torque up to 15 Ncm



Or with screwdriver SDH/SDHL/SDHXL for handpiece, use contra-angle handpiece



Or with screwdriver SDAO for AO connection, use ETAO handle



Implant covered with cover screw



B: or can be made other prosthetic actions depending on specific situation and choosing Related Dental superstructures.