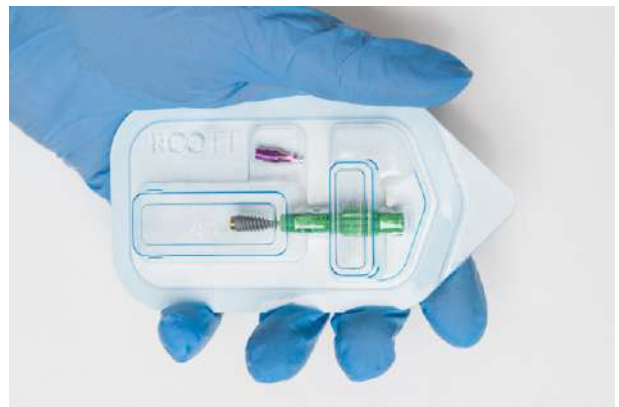


ROOTT R IMPLANT (with breaking point) PLACEMENT PROTOCOL from box opening to complete implant insertion

1 Take a box in your hand



2 Take the blister out



3 Carefully open the blister



- 4 Take out the implant, holding only the green part



- 5 Take implant driver R and insert it to the implant. Make sure the tool is inserted firmly.

Use implant driver IT/ITL



or ITHS/ITH/ITH



or ITAO



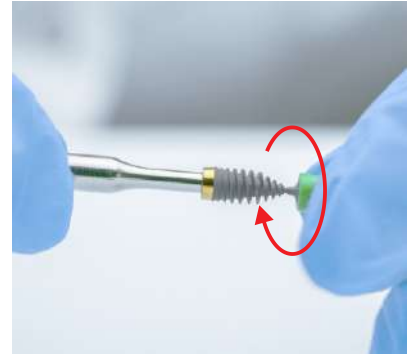
- 6 The holder can be twisted off or broken off. We recommend to twist off the holder.

A. Hold the instrument tight with one hand and with the other hold the holder, twisting until the implant separates from the holder.

Hold with implant driver IT/ITL

or ITHS/ITH/ITH

or ITAO

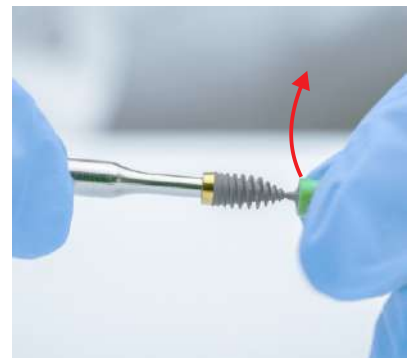
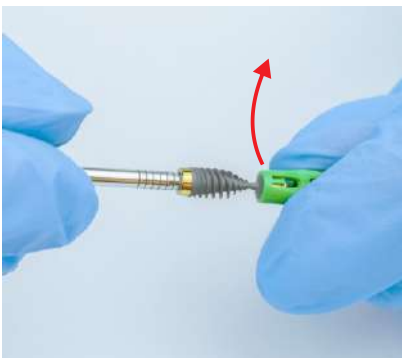


B. Hold the instrument tight with one hand and with the other hold the holder and break it off.

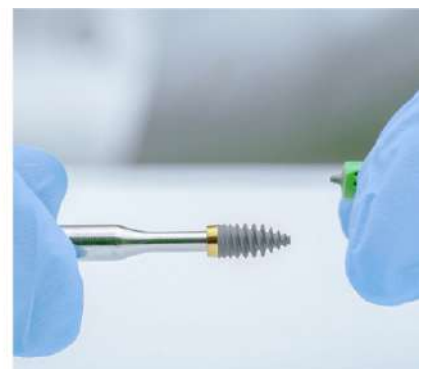
Hold with implant driver IT/ITL

or ITHS/ITH/ITH

or ITAO



- 7 After twisting or breaking, the implant is separated from the holder.

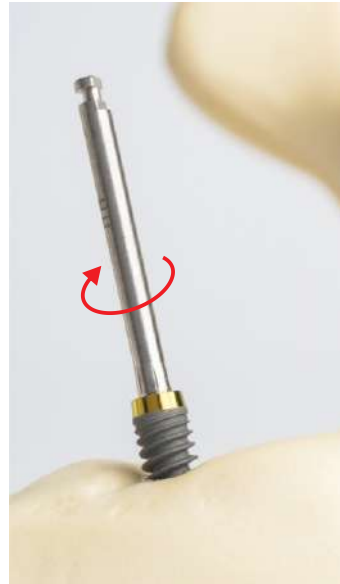


- 8 Immediately Insert implant directly to the prepared hole with implant driver R.

Use implant driver IT/ITL for ratchet TW50 with torque up to 50 Ncm



Or implant driver ITH/ITHL for handpiece, use contra-angle handpiece



Or implant driver ITAO for AO connection, use ETAO handle



Implant insertion via direct insertion - never exceed 100 Ncm.

9 Implant inserted in subcrestal position

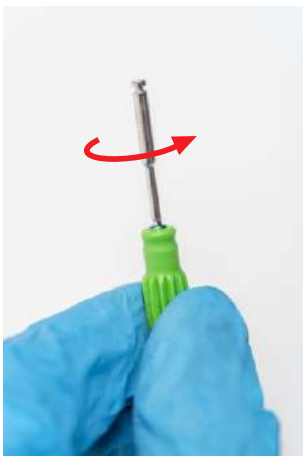


10 A: Implant can be covered with covering screw SC.

Unscrew a cover screw SC from the green holder.
Manually unscrew with screwdriver SD/SDL/SDXL



Or with screwdriver SDH/SDHL/
SDHXL for handpiece,
use contra-angle handpiece



Or with screwdriver SDAO for AO
connection, use ETAO handle



Screw cover screw SC to cover the implant

With screwdriver SD/SDL/SDXL
for ratchet TW50, torque up to
15 Ncm



Or with screwdriver SDH/SDHL/
SDHXL for handpiece, use
contra-angle handpiece



Or with screwdriver SDAO for AO
connection, use ETAO handle

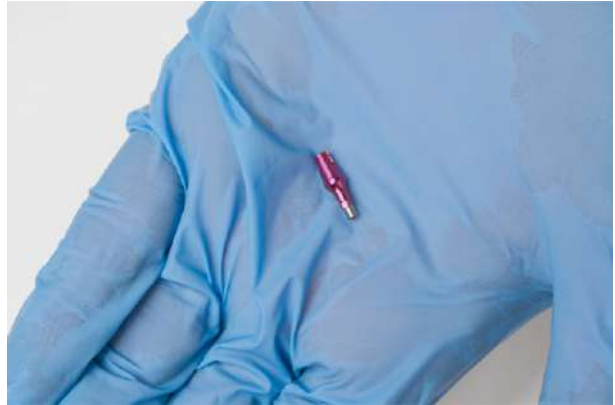


Implant covered with cover screw



B: or can be made other prosthetic actions depending on specific situation and choosing Related Dental superstructures.

- 11 In the package can be found carrier CRE with SLT8 screw.
Please note that screw SLT8 is screwed in opposite side of CRE.



Unscrew SLT8 screw with any screwdriver **U** (SD/SDL/SDH/SDHL/SDHXL/SDAO)

