

# ROOTT R IMPLANT PLACEMENT PROTOCOL

## from box opening to complete implant insertion

① Take a box in your hand



② Open the box: push & pull to open



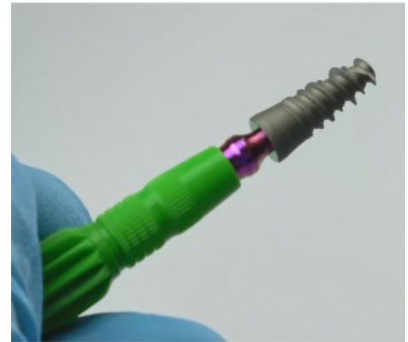
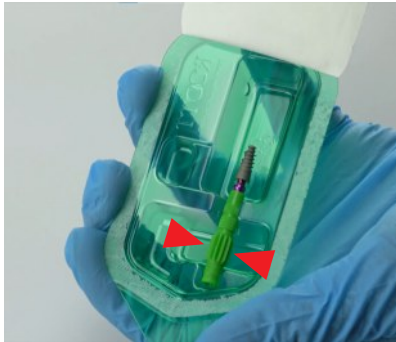
③ Take the blister out



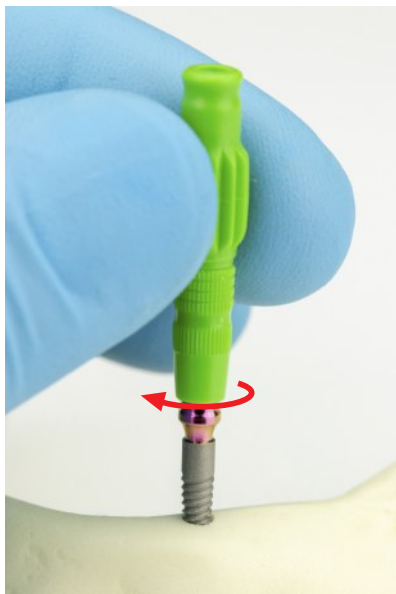
④ Carefully open the blister



- 5 Take out the implant, holding only the green part

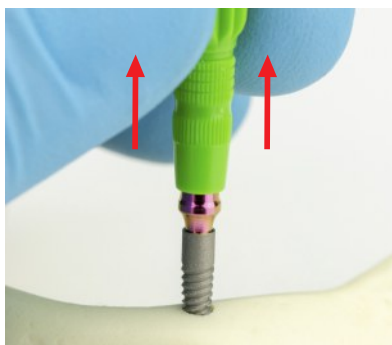
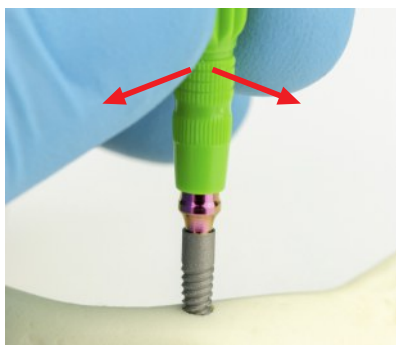


- 6 Immediately insert clockwise implant to prepared hole, just after opened the box, holding on green holder



Green holder is not intended to be used as an implant driver

- 7 Remove green holder by side to side slow motion and lift up



- 8 Insert implant via CRE with implant driver **C CS B BS** . Use implant driver ITES/ITE/ITEL/ITEXL for ratchet TW50 with torque up to 40 Ncm



Or implant driver ITEH/ITEHL for handpiece, use contra-angle handpiece



Or implant driver ITEAO for AO connection, use ETAO handle



Implant insertion via CRE carrier part - never exceed 50 Ncm

- 9 Remove CRE.  
Unscrew SLT8 screw with screwdriver **U** . Use screwdriver SD/SDL/SDXL for ratchet TW50



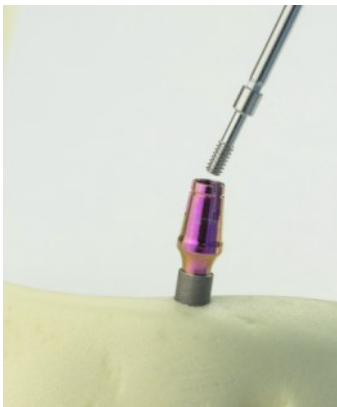
Or screwdriver SDH/SDHL/  
SDHXL for handpiece,  
use contra-angle handpiece



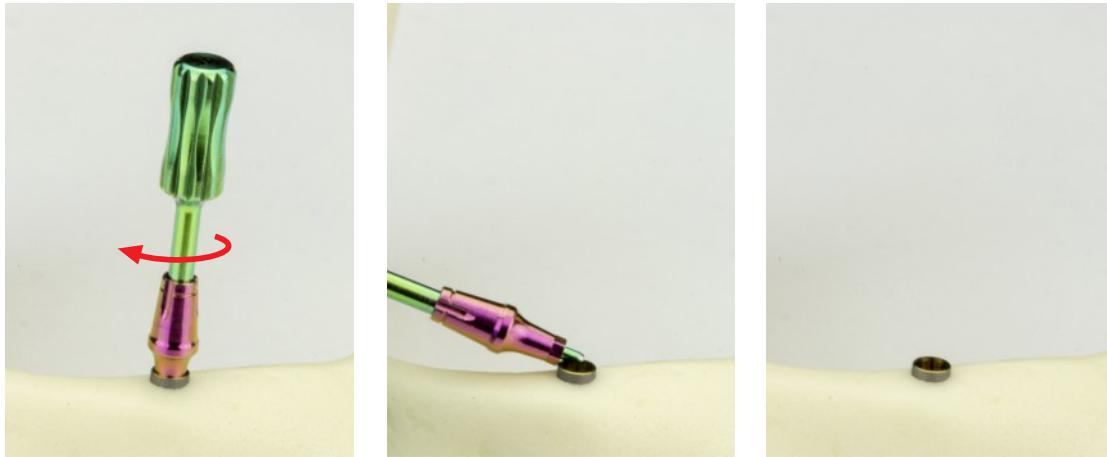
Or screwdriver SDAO  
for AO connection, use  
ETAO handle



Remove the screw



And remove with abutment extractor **R** SR/SRL



- 10 Insert implant via direct insertion with implant driver **R**  
Use implant driver IT/ITL for ratchet TW50 with torque up to 50 Ncm.



Or implant driver  
ITH/ITHL/ITHS for handpiece,  
use contra-angle handpiece



Or implant driver ITAO  
for AO connection,  
use ETAO handle



Implant insertion via direct insertion never exceed 100 Ncm.

- 11 Implant inserted in subcrestal position



- 12 A: Implant can be covered with covering screw SC with screwdrivers **U**



B: or/and can be made other prosthetic actions depending on specific situation and choosing Related Dental superstructures.