



**Summary of Safety and Clinical Performance**  
**ROOTT Dental Implant System**  
**Healing abutments for ROOTT M / P Implants**

**Preface**

*This Summary of Safety and Clinical Performance (SSCP) is intended to provide public access to an up-to-date summary of the main aspects of the safety and clinical performance of the ROOTT Dental Implant System Healing abutments for ROOTT M / P Implants.*

*The SSCP is not intended to replace the Instructions for Use (IFU) as the main document to ensure the safe use of the device, nor it is intended to provide diagnostic or therapeutic suggestions to intended users or patients.*

***The following information is intended for users/healthcare professionals.***

**1. Device identification and general information**

<b>1.1.</b>	<b>Device trade name(s)</b>	<b>Healing abutments for ROOTT M / P Implants:</b> Regular (REF: GFMx, x - height); Narrow (REF: GFNMx, x - height)
<b>1.2.</b>	<b>Manufacturer's name and address</b>	Name: <b>TRATE AG</b> Address: Bahnhofstrasse 16, 6037 Root, Switzerland Homepage: <a href="https://www.trate.com">https://www.trate.com</a>
<b>1.3.</b>	<b>Manufacturer's Actor ID/SRN</b>	<b>SRN:</b> CH-MF-000019071
<b>1.4.</b>	<b>Basic UDI-DI</b>	76300538HabutmentMKT
<b>1.5.</b>	<b>Medical device nomenclature description / text</b>	P010201, category "DENTAL IMPLANTS AND ACCESSORIES"
<b>1.6.</b>	<b>Class of device</b>	IIb
<b>1.7.</b>	<b>Year when the first certificate (CE) was issued covering the device (available on the EU market)</b>	2017
<b>1.8.</b>	<b>Authorised representative if applicable; name and the SRN</b>	TRATE UAB, Lithuania, Jonavos g. 254, 44110 Kaunas <b>SRN:</b> LT-AR-000002509
<b>1.9.</b>	<b>Notified Bodies (NB) name (the NB that will validate the SSCP) and the NB's single identification number</b>	BSI Group The Netherlands B.V. (2797)

**2. Intended use of the device**

**2.1. Intended purpose**

ROOTT Healing abutments are available as a one-piece or a two-piece temporary abutments with intended purpose to protect inner configuration of the implant from contamination by soft tissues and form the soft tissues during the healing process.

## Summary of Safety and Clinical Performance

### ROOTT Dental Implant System

#### Healing abutments for ROOTT M / P Implants

##### 2.2. Indication(s) and target population(s)

###### Indication

Healing abutments are indicated for use with endosseous dental implants or implant abutments in the maxilla or mandible for supporting single tooth or full arch denture procedures.

Healing abutment is screwed onto the top of the implant during surgical procedure to guide the healing of soft tissue to replicate the contours and dimensions of the natural tooth that is being replaced by the implant and to ensure access to the implant restorative platforms for impression and definitive abutment placement.

###### Patient population

Healing abutments are to be used in patients subject to dental implant treatment.

##### 2.3. Contraindications and/or limitations

Healing abutments are only used if dental implants are placed, so all contraindications that prohibit the use of dental implants prohibit the use of the healing abutments as well. The contraindications of the healing abutments are always connected to that of the dental implants. Refer to the instructions for use for relevant type of ROOTT Dental Implants.

###### Limitations

To achieve the desired performance, healing abutments are only to be used with the products described in the Compatibility book and in accordance with the intended use for each product.

#### 3. Device description

##### 3.1. Description of the device

ROOTT Dental Implant System consists of ROOTT Dental Implants and Related Superstructures, i.e. healing abutments and abutments.

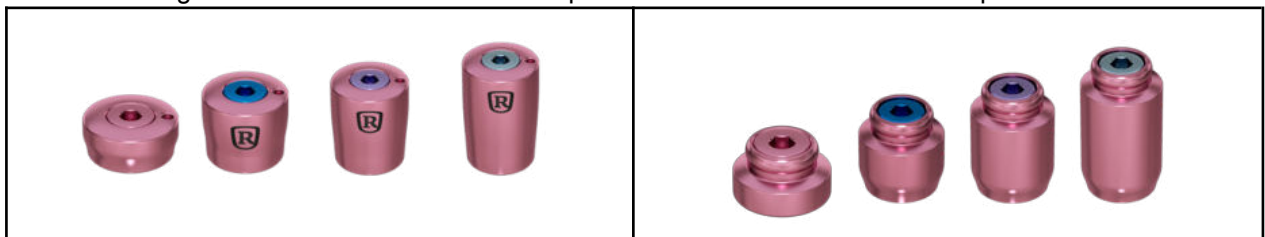
Healing abutment is fixed onto the top of the implant during surgical procedure to guide the healing of soft tissue to replicate the contours and dimensions of the natural tooth that is being replaced by the implant and to ensure access to the implant restorative platforms for impression and definitive abutment placement.

Healing abutments for ROOTT M / P Implants are produced from Titanium Alloy (Ti 6-Al 4-V ELI Grade 23).

Healing abutments for ROOTT M / P Implants are delivered in non-sterile conditions. All ROOTT Dental Implants and Related Superstructures are single use devices.

Healing abutment is screwed onto the top of the implant during surgical procedure to guide the healing of soft tissue to replicate the contours and dimensions of the natural tooth that is being replaced by the implant and to ensure access to the implant restorative platforms for impression and definitive abutment placement.

Healing abutments for ROOTT M / P Implants are available in different shape and size:



## Summary of Safety and Clinical Performance

### ROOTT Dental Implant System

#### Healing abutments for ROOTT M / P Implants

Regular	Narrow
<b>Material:</b> Titanium Alloy	<b>Material:</b> Titanium Alloy
<b>REF:</b> GFMx (x - height) GFM0	<b>REF:</b> GFNMx (x - height) GFNM0
<b>Models:</b> GFM0, GFM2, GFM4, GFM6	<b>Models:</b> GFNM0, GFNM2, GFNM4, GFNM6
<b>Range of applications:</b> Shall be used to guide the healing of the soft tissues with sufficient space between placed implants with multi-unit.	<b>Range of applications:</b> Shall be used to guide the healing of the soft tissues where insufficient space between placed implants with multi-unit and in cases with narrow ridge and in aesthetically important areas.

#### 3.2. A reference to previous generation(s) or variants if such exist, and a description of the differences

ROOTT Dental Implants and Related Superstructures do not have any novel features in comparison with the current state of the art similar products. Constructions of all products do not have any principal and critical innovations or modifications and are generally accepted at the moment as state of the art construction (current level of technique). No clinically relevant changes to any of the devices were made.

#### 3.3. Description of any accessories which are intended to be used in combination with the device

Based on the definition provided by Article 2 (2) of MDR 2017 / 745, "Accessory" means an article which whilst not being itself a medical device, is intended by its manufacturer to be used together with one or several particular medical device(s) to specially enable the medical device(s) to be used in accordance with its/their intended purpose(s) or to specifically and directly assist the medical functionality of the medical device(s) in terms of its/their intended purpose.

ROOTT Dental Implants and Related Superstructures do not have accessories which fall under the definition.

#### 3.4. Description of any other devices and products which are intended to be used in combination with the device

ROOTT Healing abutments M / P are intended to be used with ROOTT M / P dental implants.

ROOTT Dental Implant System consists of other medical devices intended to be used in combination with it that are not covered by this report, such as:

- Associated surgical instruments (e.g. insertion tools and auxiliary tools).

## 4. Risks and warnings

### 4.1. Residual risks and undesirable side-effects

#### Residual risks

Healing abutments and Implant abutments are an integral part of the dental implant means

## Summary of Safety and Clinical Performance

### ROOTT Dental Implant System

#### Healing abutments for ROOTT M / P Implants

treatment of implant, so residual risks are directly related to the dental implant and the whole implantation success.

One hundred percent implant success cannot be guaranteed. Failure to observe the indicated limitations of use and working steps may result in failure.

Inappropriate use of the products leads to badly executed work and increased risks.

Reuse of single-use devices increases risk of contamination, cross-contamination and the whole implantation failure.

Treatment by means of implants may lead to loss of bone, biologic and mechanical failures, including fatigue fracture of implants. Close cooperation between surgeon, restorative dentist and dental laboratory technician is essential for successful implant treatment.

Mechanical failure could occur in case of torque force violated, the device is used in unintended way or with not ROOTT system instruments.

If the treatment is performed to the contraindicated patient, the failure of the whole implantation is possible. In case, if implantation was performed in conditions of absolute contraindications, the manufacturer does not accept any warranty requirements.

Occurrence of temporary discomfort after the invasive treatment such as typical side effects are common.

The risk of swallowed or aspirated small devices by patients is possible. Because of the small size of the devices, care must be taken that they are not swallowed or aspirated by the patient. It is appropriate to use specific supporting tools to prevent aspiration of loose parts (e.g. a throat shield).

Inappropriate cleaning, disinfection and sterilisation procedures before the first use of dental superstructures can lead to whole implantation failure.

Infection can inhibit implant osseointegration and lead to implant failure, however it can be avoided if sterility is maintained and assured during the whole implant surgery and if proper maintenance, medication and oral hygiene is taken upon after the treatment.

#### Side effects

The placement of these devices is part of an invasive treatment which may be associated with typical side effects such as inflammation, infection, bleeding, hematoma, pain and swelling. During abutment placement or removal the pharyngeal reflex (gag reflex) may be triggered in patients with a sensitive gag reflex.

Healing abutments are part of a multi-component system that replaces teeth and as a result, the implant recipient may experience side effects similar to these associated with teeth, such as retained cement, calculus, mucositis, ulcers, soft tissue hyperplasia, soft and / or hard tissues recessions. Some patients may experience discoloration in the mucosal area such as graying.

#### Probability of occurrence of residual risks

Probability to experience residual risks depends on many factors, including patients health, surgery planning, etc. and can be extremely increased in case of violation of the instructions. The typical side effects are probable and common, while more persistent and undesirable side effects are rare. Only 9.5% of all patients in the PMCF study experienced early postoperative complications and recorded such side-effects as pain, infection, loss of ridge bone, and paraesthesia. No adverse events have been observed and reported during the 5-year follow-up of the PMCF study. For people with no contraindications implantation success is excellent. Thus close cooperation between surgeon, restorative dentist and dental laboratory technician is essential for successful implant treatment.

#### Lifetime

The lifetime of the devices is not specifically defined. However, healing abutments are packed and



## **Summary of Safety and Clinical Performance**

### **ROOTT Dental Implant System**

#### **Healing abutments for ROOTT M / P Implants**

delivered non-sterile in a blister that is material equivalent to the blister in which dental implants are packed and sterilised. Healing abutment lifetime can be defined as the time during which a package of the devices is not damaged to protect the device from the deterioration and alteration. Nonetheless the expected lifetime of the device packed in the blister can be expected as a minimum of 5 years based on own post market surveillance data, if the packaging, i.e. blister is not damaged or otherwise compromised. Visual inspection of the device and device package after the 5 years is highly recommended by the manufacturer to ensure integrity of the package and if there are no visual signs of damage and alterations, the lifetime can be prolonged.

#### **4.2. Warnings and precautions**

##### **Warnings**

If the primary package has been damaged or unintentionally opened before use DO NOT USE IT and contact local representative of TRATE AG for exchange via web page: [www.trate.com](http://www.trate.com)

Because of the small size of the devices, care must be taken that they are not swallowed or aspirated by the patient. It is appropriate to use specific supporting tools to prevent aspiration of loose parts (e.g. a throat shield).

##### **Cautions/Precautions**

It is recommended that ROOTT Dental implants are used only with dedicated surgical instruments and prosthetic components, as violation of this recommendation may lead to mechanical instrumental failure or unsatisfactory treatment results.

Never exceed recommended tightening torque for the screw. Overtightening of abutment may lead to a screw fracture.

Close cooperation between surgeon, restorative dentist and dental laboratory technician is essential for successful implant treatment.

It is strongly recommended that clinicians, new as well as experienced users, always go through special training before using a new product or treatment method. TRATE offers a wide range of different courses. For more information, please visit [www.trate.com](http://www.trate.com)

ROOTT Dental Implant System must be used in accordance with the instructions for use provided by the manufacturer. It is the practitioner's responsibility to use devices in accordance with these instructions and determine if the device fits the individual patient situation.

Special attention has to be given to patients who have localised or systemic factors that could interfere with the healing process of bone, or soft tissue, or the osseointegration process (e.g. smoking, poor oral hygiene, uncontrolled diabetes, facial radiotherapy, infections in neighbourhood tooth or bone, patients passed bisphosphonate therapy).

Preoperative hard tissue and soft tissue deficit may yield a compromised aesthetic result.

All components, instruments and tooling used during the clinical and laboratory procedures must be maintained in good conditions and care must be taken that instrumentation does not damage implants or other components.

#### **4.3. Other relevant aspects of safety, including a summary of any field safety corrective action (FSCA including FSN) if applicable**

No other additional information related to the device safety, including any field safety corrective actions, is available. The devices have not been subject to any field safety corrective actions.

## Summary of Safety and Clinical Performance

### ROOTT Dental Implant System

#### Healing abutments for ROOTT M / P Implants

#### 5. Summary of clinical evaluation and post-market clinical follow-up (PMCF)

##### 5.1. Summary of clinical data related to equivalent device, if applicable

N/A - The demonstration of equivalence is not applicable. Equivalence is not claimed.

Nonetheless, regular scientific literature review is conducted to collect and analyse clinical data related to similar devices available on the market. According to the reviewed literature, the following titanium (commercially pure and titanium alloy) dental implant manufacturer devices can be established as similar benchmark devices for ROOTT Dental Implant system: Neoss; Dentsply Sirona Implants (OsseoSpeed, Astra Tech, Ankylos); Nobel Biocare (TiUnite, Nobel-Speedy), Biomet 3i (NanoTite, Osseotite); Intra-Lock International; Southern Implants; Sweden&Martina; Straumann (Standard Plus, Tapered effect).

In summary, literature data from similar devices demonstrated the ubiquity of design, lack of novelty, and a known safety and performance profile of the whole generic device group. Various studies have shown that failure rates over considerable time periods are extremely low, while most of the studies considering complications are published in case reports or case series, which can not be considered for a large scale estimation and are highly patient specific.

The following complications, side-effects and risks of the overall implant treatment were identified from the reviewed literature:

- Technical: loosening of abutment of prosthesis screw; fatigue fracture of implant, abutment or prosthesis screw; micro-motion between abutment and implant leading to bacterial leakage; gingival discoloration due to abutment colour; implant micromovement (mobility); wear debris;
- Biological: corrosion; metal ion/particle release; allergic reactions; hypersensitivity; mild facial erythema; hyperplastic tissues; cytotoxicity; inflammatory directions (mucositis, peri-implantitis);
- Clinical: marginal bone loss; peri-implant radiolucency; mechanical and/or thermal damage to the tissue during implant site preparation; tissue necrosis; suppuration and bleeding due bacterial colonisation; swelling; haematomas; pain; wound dehiscence; fistula.

Since the healing abutments can only be used in combination with dental implants, they are usually not singled-out in the clinical literature data. Implant survival is always directly related to the final and overall device configuration, i.e. dental implant plus abutment/healing abutment.

Depending on the details of the study and the materials used, the typical implant survival rate after 5 years is determined to be over 95.6 %. The survival rate over 95% after 5 years is an excellent result and an indication that implant-supported restorations are an excellent treatment modality. While complications are mainly infections, the rates average around 10 % of the patients and 20 % of the patients. Given these results, the extent for improving either the materials or the clinical procedures is limited. For this reason, the two well-established titanium alloys continue to be used for the overwhelming majority of implants used in dentistry, and this use seems likely to continue for the foreseeable future. The results in the reviewed studies are comparable and show similar tendencies, thus titanium dental implants, regardless of the implant material, design, surgical procedure and/or patient characteristics and potential complications, can be described as having predictable outcomes.

Ultimately, an evidently positive benefit-risk ratio of implant therapy can be derived, considering the significantly low reported implant failures and complication cases compared with highly beneficial patient satisfaction rates, restored masticatory function, increased aesthetic requirements and patients overall physical and mental health. Therefore titanium dental implants can be confidently determined to be a state-of-the-art treatment option for patients missing teeth.



## Summary of Safety and Clinical Performance

### ROOTT Dental Implant System

#### Healing abutments for ROOTT M / P Implants

##### 5.2. Summary of clinical data from conducted investigations of the device before CE-marking, if applicable

N/A - No clinical investigations were conducted for the devices before CE-marking.

##### 5.3. Summary of clinical data from other sources, if applicable

Healing abutments are usually used on two-piece implants with delayed loading protocol. One-piece implants, however, are usually implanted with immediate loading indicating that the prosthesis is provided immediately after implant placement. This means that no healing abutments are used and the intended purpose of the healing abutments is fulfilled by the dental abutments or the crown itself. The decision whether to use a healing abutment or not solely depends on the implantologist treatment plan and specific patient case. During the PMCF study no healing abutments were placed on ROOTT M / P implants. Therefore the clinical data of the devices in question is collected from clinical cases received from the implantologists collaborating with the Manufacturer.

Clinical cases, where GFM healing abutments were placed on ROOTT M / P implants are presented below. The devices were reported to perform as intended. No issues related to device safety and/or performance have been reported to the Manufacturer by the intended users. No adverse events or issues directly related to healing abutments have been received so far.

**Case 1:** 5 GFM2 healing abutments were placed over ROOTT M in the maxilla. Soft tissues healed and formed successfully and uneventfully.



**Case 2:** 6 GFM healing abutments were placed on ROOTT M implants in the mandible. Implants were loaded according to the immediate loading protocol, soft tissues healed and formed successfully and uneventfully, after 2 weeks final fixed overdentures were delivered.

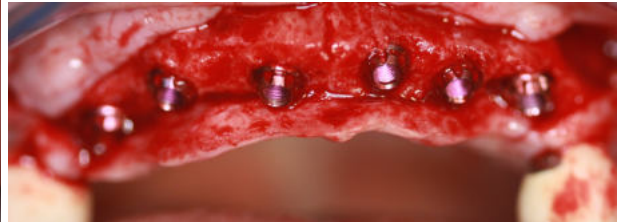


## Summary of Safety and Clinical Performance

### ROOTT Dental Implant System

#### Healing abutments for ROOTT M / P Implants

**Case 3:** 6 GFM2 healing abutments were placed over ROOTT P implants in the maxilla (D3 type of bone). Implants were loaded according to the immediate loading protocol, soft tissues healed and formed successfully and uneventfully, after 2 weeks a final metal ceramic bridge was delivered.



**Case 4:** 4 GFM healing abutments were placed over ROOTT M implants in the mandible. Temporary prosthesis was constructed over healing abutments. Soft tissues healed and formed successfully and uneventfully. After healing, a final fixed overdenture was placed.



**Case 5:** 1 GFM2 healing abutment over ROOTT M. Soft tissues healed and formed successfully and uneventfully. After the healing process, a bridge was placed.

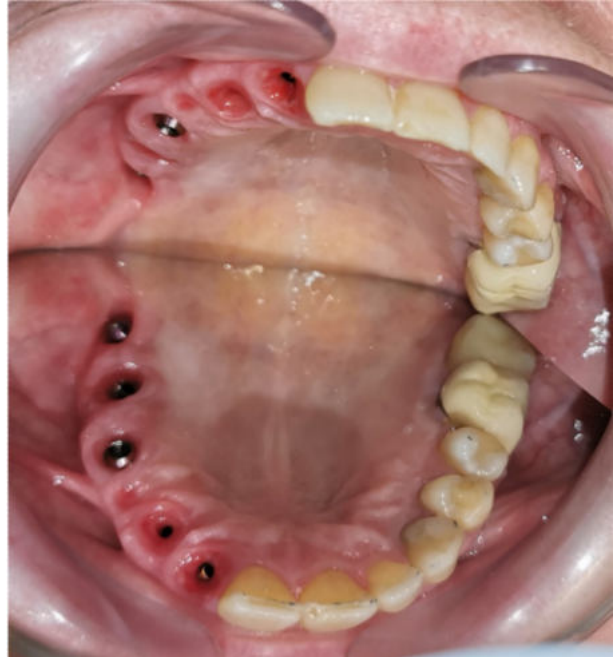
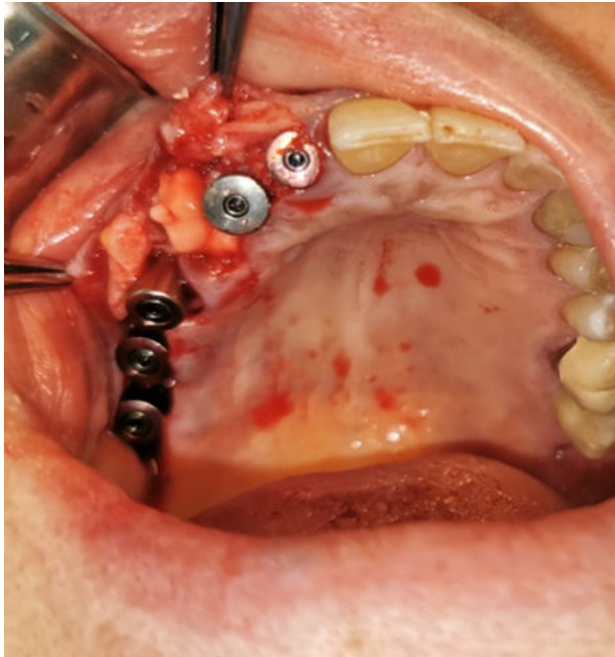
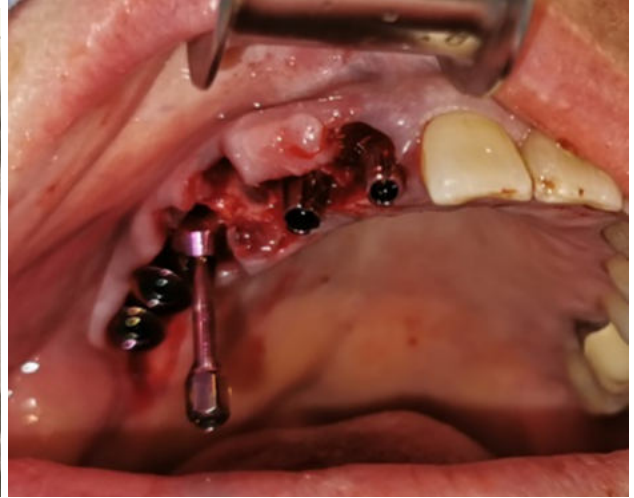
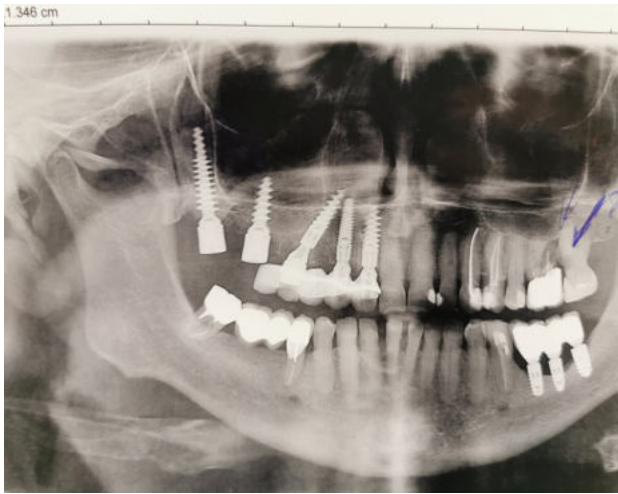


## Summary of Safety and Clinical Performance ROOTT Dental Implant System Healing abutments for ROOTT M / P Implants



**Case 6:** Missing teeth in the maxilla posterior area were replaced with 5 implants - 3 ROOTT R, 1 ROOTT M and 1 ROOTT P. Healing abutments were placed over the implants, including 3 GFM (1 on ROOTT M implant, 1 on ROOTT P and 1 on ROOTT R and angled abutment). Soft tissues healed successfully and uneventfully. After the healing process, healing abutments were removed, impressions were taken and the final screw-retained bridge was delivered.

## Summary of Safety and Clinical Performance ROOTT Dental Implant System Healing abutments for ROOTT M / P Implants

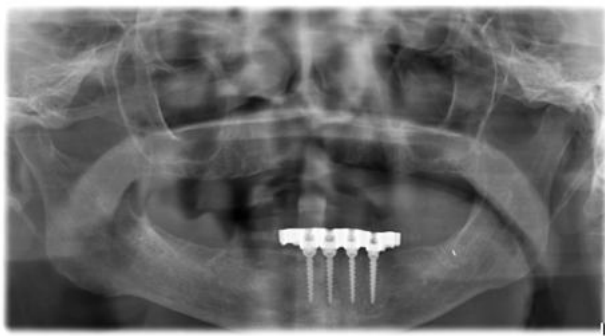
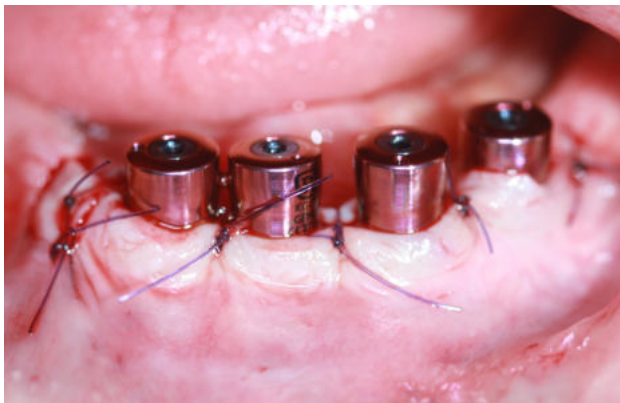
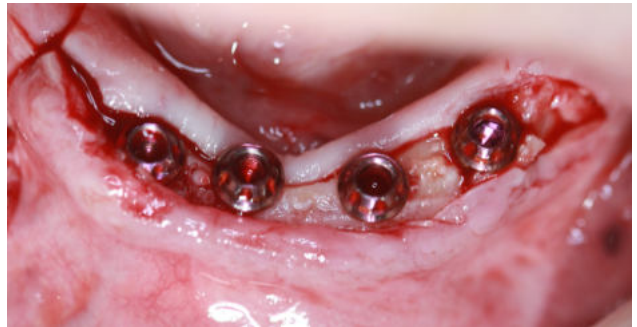


**Case 7:** A completely edentulous mandible was rehabilitated with tissue level ROOTT M implants with open flap and immediate loading. 4 GFM healing abutments were placed over the implants. Soft tissues healed successfully and uneventfully. After the healing process, a screw-retained milled titanium bar with PEEK overdenture was delivered.



# TRATE

## Summary of Safety and Clinical Performance ROOTT Dental Implant System Healing abutments for ROOTT M / P Implants





## **Summary of Safety and Clinical Performance**

### **ROOTT Dental Implant System**

#### **Healing abutments for ROOTT M / P Implants**

##### **5.4. An overall summary of the clinical performance and safety**

TRATE started its clinical register at the end of 2012 as part of the PMCF. The clinical data collected so far shows excellent clinical results and are in line with the clinical data available in the literature showing that ROOTT Dental Implant devices are not inferior to similar devices belonging to the generic device group available on the market.

Medical device performance is described as the ability to achieve its intended purpose as claimed by the manufacturer. Dental implants achieve their intended purpose by replacing missing teeth. Accordingly, healing abutment performance is described as their ability to protect the implant from soft-tissue contamination ingress into the implant and ability to form the soft-tissues. No reports indicating that the devices do not perform as intended have been received so far. All received clinical cases showed successful healing and formation of soft tissues; no cases of implant failure caused by infections due to soft tissue contamination have been reported. Another performance indicator is the absence of mechanical failures, i.e. implant or superstructure fatigue fracture. In accordance with the collected clinical data no adverse events, including implant and/or healing abutment failure due to mechanical fatigue fracture have been observed and recorded.

Medical device safety is described as the acceptability of risks as weighed against benefits, when using the medical device according to the manufacturer's labelling. Safety concerns related to healing abutments are mainly related to complication rates (side-effects). The non-occurrence of severe side-effects is an indicator for the clinical safety of the healing abutments. Since no severe side-effects were reported during the years of the device on the market, ROOTT Healing abutments M / P can be considered of the highest clinical safety. No side-effects were reported to be specifically caused by the healing abutments.

Clinical benefits to the patient should be experienced immediately after the implant treatment and the healing process is over and should last as long as the implant is in place and retains its function. The primary intended clinical benefits to the patient are restored previous dental and masticatory function, bite force, restored esthetics, which relates to patient satisfaction and increased physical and mental health and general, health related quality of life. These benefits should be achieved and last as long as the implant is in place and no severe complications occur. Considering the results obtained from the PMCF study and data obtained from the literature, evidently positive benefit-risk ratio of implant therapy can be derived, considering the significantly low reported implant failures and complication cases compared with highly beneficial patient satisfaction rates, restored masticatory function, increased aesthetic requirements and patients overall physical and mental health. Patients treated with implants have higher levels of satisfaction, quality of life, function and bite force than patients treated conventionally, despite the possible risks associated with the implant therapy. According to the conducted benefit-risk analysis, the following conclusion was reached:

The manufacturer has considered the totality of the evidence regarding the extent of probable benefits and the extent of probable risks of a device in the benefit-risk information. All residual risks were mitigated as far as it is possible to reduce until additional risk controls are not practicable. Those implemented risk control measures are verified and considered as effective based on the issued annual PMS report which contains evidence of no incidents, recalls, adverse events, evidence of product cleanliness based on test reports, and evidence of product performance based on collected clinical case data. All identified hazardous situations have been evaluated and all risks have been reduced to an acceptable level based upon a benefit-risk analysis. Each residual risk is acceptable, the benefits outweigh the risks by far. No additional side-effects arising from the residual risks were identified. Based on the benefits and risks it can be concluded that the multiple benefits outweigh the residual risks by far. Additional risk control measures are not applicable and the medical device, i.e. ROOTT Healing abutments M / P can be considered safe for their intended use.

## Summary of Safety and Clinical Performance

### ROOTT Dental Implant System

#### Healing abutments for ROOTT M / P Implants

##### 5.5. Ongoing or planned post-market clinical follow-up

Post-market clinical follow-up plan is established to proactively collect and evaluate clinical data from the use in or on humans of a device which bears a CE marking and is placed on the market or put into service within its intended purpose, with the aim of confirming the safety and performance throughout the expected lifetime of the devices, of ensuring continued acceptability of identified risks and of detecting emerging risks on the basis of factual evidence.

The only activity that is undertaken under the post-market clinical follow-up of the ROOTT Dental Implant System devices is a PMCF study. PMCF study is planned as a prospective, multicentric, non-controlled, non-randomized, open label study to evaluate the CE-labelled ROOTT Dental Implant System under routine conditions. The primary objective of the PMCF study is to validate the ROOTT Dental Implant System by its practical daily use and application as state-of-the-art with regard to its use and usability, as intended. Clinical data is collected and evaluated in order to: confirm the safety and performance of the device throughout its expected lifetime; identify previously unknown side-effects and monitor the identified side-effects and contraindications; identify and analyse emergent risks; ensure the continued acceptability of the benefit-risk ratio; identify possible systematic misuse or off-label use of the device, with a view to verify that the intended purpose is correct. The primary endpoint of the PMCF study is the survival rate of ROOTT Dental Implants after a 5-year follow-up of at least 95%. The secondary endpoints are mainly attributed to the postoperative outcomes, such as determination and evaluation of short-term complications related to the implantation procedure and/or implants; determination and evaluation of mid-term and long-term complications related to the implants; and determination and evaluation of potential causes for implant loss. The following questions were raised regarding the safety and performance of the healing abutments:

1. Do healing abutments perform as intended by forming the gingiva as required during the healing stage?
2. Do healing abutments adequately protect the implant from soft tissue contamination during the healing stage?
3. Have healing abutments or abutments caused an inflammation reaction due to selected material?
4. Have healing abutments or abutments caused implant failure due to the state of cleanliness and proposed sterilisation procedure?

However, no healing abutments were placed on the ROOTT M / P Implants during the PMCF study. In clinical practice, when placing one-piece implants, especially with immediate loading protocol, healing abutments are rarely used and their intended purpose is fulfilled by other devices, i.e. abutments or the dental crowns itself.

According to clinical data available on other ROOTT healing abutments (Healing abutments for ROOTT R Implants) from the PMCF study, no implant failures were reported to be directly related to the healing abutments. Also, no healing abutment failures, or adverse events related to healing abutments were observed during the years of the study follow-up. Therefore, it can be presumed that no such issues should occur with the devices in question as well.

Since the healing abutments are only intended to be used for up to 180 days, a period after which the devices are removed from the patient, no long-term follow-up of these devices is possible and applicable.

##### 6. Possible diagnostic or therapeutic alternatives

Since Healing abutments do not have stand-alone indications and are intended to be used in combination with placed ROOTT Dental Implants, therefore when considering alternatives the indication of implants shall be taken into account.



## Summary of Safety and Clinical Performance

### ROOTT Dental Implant System

#### Healing abutments for ROOTT M / P Implants

When a lack in the dentition has an impact on the ability to chew, there are several alternative possibilities to implants, depending on the severity of teeth defects:

- Conservative Treatment: efforts to save the teeth of a patient (possible only in mild cases). When the natural teeth can be saved, this might be the best option for the patient, but is no longer an option for patients who already lost teeth.
- Prosthesis without anchorage: this prosthesis is the most painless for the patient, but such patients are commonly restricted to soft food that is easy to chew and are not protected from bone loss.
- Endodontic implants: endodontic implants are artificial metallic extensions, which can extend out through the apex of the tooth into sound bone. Endodontic implants increase the root to the crown ratio and stabilise a tooth with weakened support. It serves the patient and avoids replacement of the tooth for several years.
- Crowns / Bridges: intact teeth required in proximity of the edentulous site.
- Alternative implants from other manufacturers (there are currently more than 200 different types available on the EU market).

Dental implants are the last resort in the spectrum of possibilities of a dentist to restore the ability to chew and is commonly used when teeth conservation is no longer an option. In cases where even dental implant treatment is not possible (e.g. with too poor bone quality), a dental plate or prosthesis without anchorage is commonly still an option.

#### 7. Suggested profile and training for users

For use only by dental professionals within the dental clinic. Recommended that clinicians, new as well as experienced users, always go through special training before using a new product or treatment method. TRATE offers a wide range of different courses. For more information, please visit [www.trate.com](http://www.trate.com)

#### 8. Reference to any harmonised standards and CS applied

##### Common specification(s)

N/A

##### Harmonised standard(s) under MDR

- EN ISO 11737-1:2018 Sterilization of health care products - Microbiological methods - Part 1: Determination of a population of microorganisms on products (ISO 11737-1:2018). EN ISO 11737-1:2018/A1:2021;
- EN ISO 11737-2:2020 Sterilization of health care products - Microbiological methods - Part 2: Tests of sterility performed in the definition, validation and maintenance of a sterilisation process (ISO 11737-2:2019);
- EN ISO 13485:2016 Medical devices - Quality management systems - Requirements for regulatory purposes (ISO 13485:2016). EN ISO 13485:2016/A11:2021;
- EN ISO 15223-1:2021 Medical devices - Symbols to be used with information to be supplied by the manufacturer - Part 1: General requirements;
- EN ISO 14971:2019 Medical devices - Application of risk management to medical devices (ISO 14971:2019) EN ISO 14971:2019/A11:2021.

##### State of the art standards

- EN 1642:2011 Dentistry - Medical devices for dentistry - Dental implants;
- EN ISO 10993-1:2020 Biological evaluation of medical devices - Part 1: Evaluation and testing within a risk management process (ISO 10993-1:2018, Corrected version 2018-10);

## Summary of Safety and Clinical Performance

### ROOTT Dental Implant System

#### Healing abutments for ROOTT M / P Implants

- EN ISO 17665-1:2006 Sterilization of health care products - Moist heat - Part 1: Requirements for the development, validation and routine control of a sterilization process for medical devices;
- ISO 20417:2021 Medical devices - Information to be supplied by the manufacturer.

#### 9. Revision history

SSCP revision number	Date issued	Change description	Revision validated by the Notified Body
1	2022-03-30	Printing date	<input type="checkbox"/> Yes Validation language: <input type="checkbox"/> No (only applicable for class IIa or some IIb implantable devices (MDR, Article 52 (4) 2 <sup>nd</sup> paragraph) for which the SSCP is not yet validated by the NB)
2	2022-04-04	Section 8 was managed to be in compliance with the list of applicable regulatory requirements	<input type="checkbox"/> Yes Validation language: <input type="checkbox"/> No (only applicable for class IIa or some IIb implantable devices (MDR, Article 52 (4) 2 <sup>nd</sup> paragraph) for which the SSCP is not yet validated by the NB)
3	2022-12-05	Section 1.2 updated: Manufacturer address changed. Section 8 updated	<input type="checkbox"/> Yes Validation language: <input type="checkbox"/> No (only applicable for class IIa or some IIb implantable devices (MDR, Article 52 (4) 2 <sup>nd</sup> paragraph) for which the SSCP is not yet validated by the NB)